

Model 24

UNDER-COUNTER REFRIGERATOR OR FREEZER

Features

- Choice of Refrigerator or Freezer
- Stainless Steel Construction
- 2-Inch Thick Insulation
- Adjustable Shelves

Dimensions

24" wide x 24" deep x 34½" high

Specifications

Construction

Model 24 Under-Counter

Refrigerator or Freezer shall be constructed of No. 20 gauge (0.9 mm) Type 304 stainless steel with exposed surfaces polished to No. 4 finish. Dimensions of unit shall be 34½" (876 mm) high x 24" (610 mm) deep x 24" (610 mm) wide. Refrigerator/Freezer shall set on 3" (76 mm) high x 1¾" (44 mm) deep recessed, stainless steel base.

Refrigerator and Freezer shall be available also as wall-mounted unit. Unit shall be completely insulated with 2" (51 mm) thick fiberglass insulation. Two chrome-plated wire shelves shall be adjustable on ½" (13 mm) centers to optimum height. Door seal shall be of long-life, extruded vinyl latex; and bakelite breaker strips shall be installed where interior surfaces join. Door shall be mounted on heavy-duty, chrome-plated edge-mount hinges and fitted with positive edge-mount latch. Continuous perimeter heating coil shall be concealed behind front

mullion for eliminating condensation. Cooling Supply

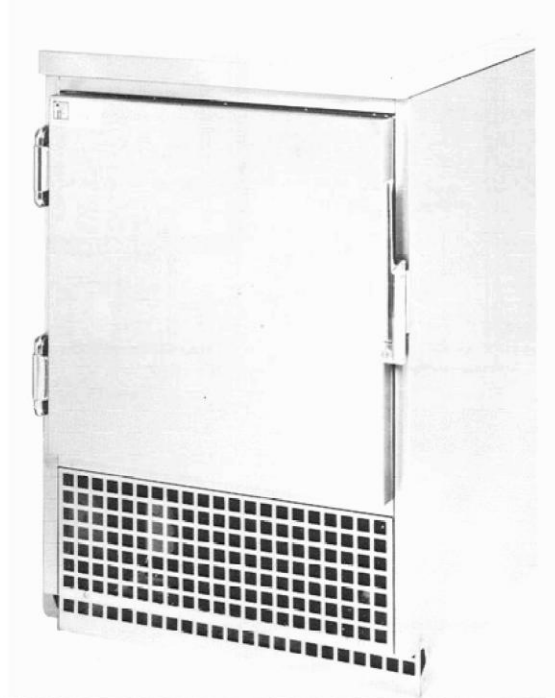
Refrigerator shall be equipped with 1/5 hp, hermetically sealed, air-cooled condensing unit with automatic self-defrosting feature. Freezer shall be equipped with 1/5 hp, hermetically-sealed, air-cooled condensing unit with manual defrost control. Compressors shall have 5-year warranty. Units shall have adjustable temperature control and pan for collecting condensate during defrost cycle.

Equipment Temperatures

Operating temperatures shall be as follows:

Refrigerator: 35°F to 40°F
(2°C to 4°C)

Freezer: -5°F to 0°F
(-21°C to -18°C)



Options

Model Size:

- 24" (610 mm) wide; 5.0 cu. ft. (141 liters).

Model Configuration:

- Under-counter unit.
 Wall-mounted unit.

Type of Unit:

- Refrigerator (Model 24 UCR).
 Freezer (Model 24 UCF).

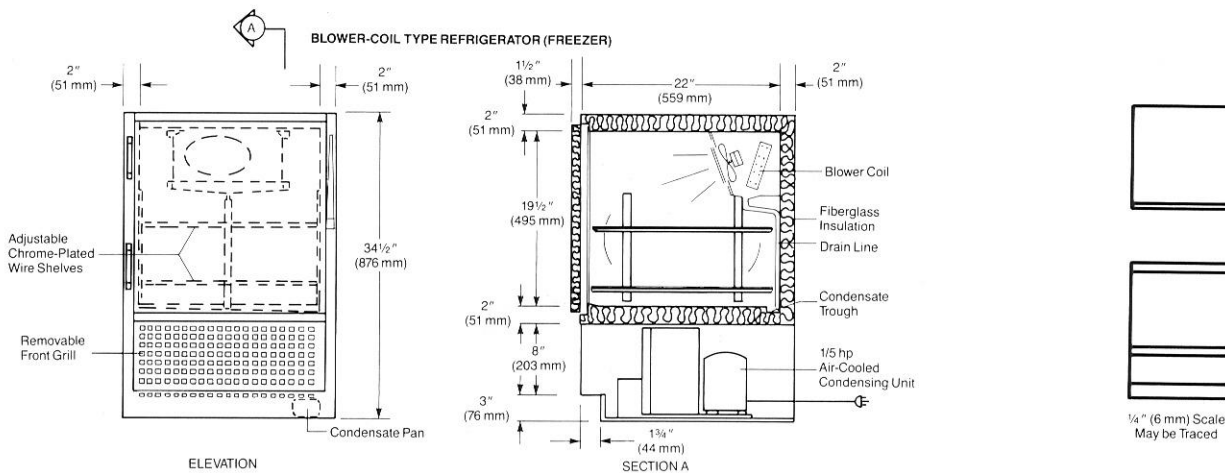
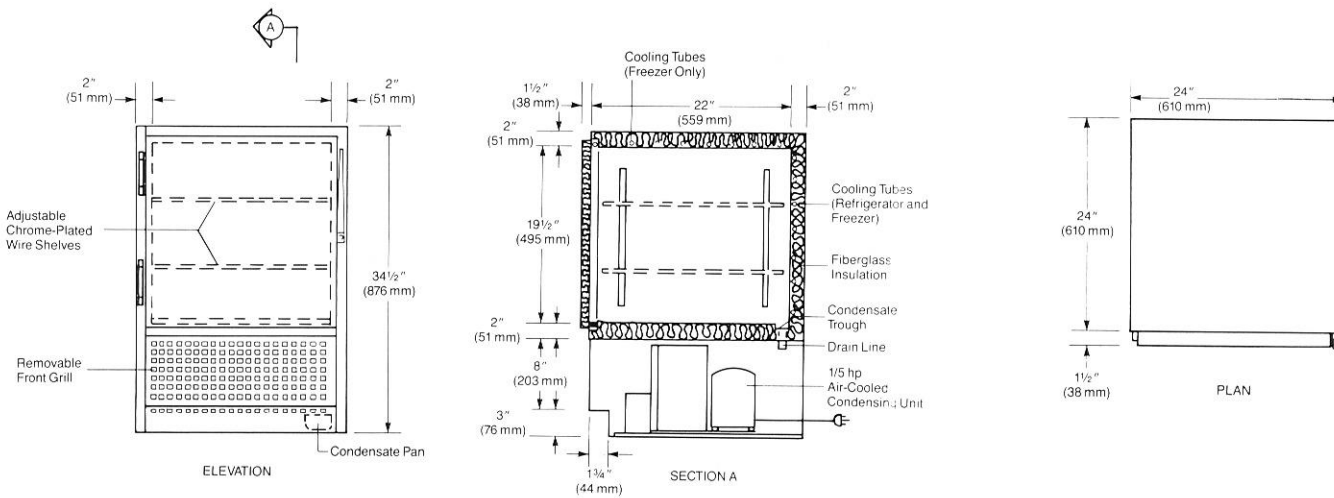
Cooling Evaporators:

- Blower coil (refrigerator or freezer).
 Concealed "cold-wall" serpentine coil refrigerator or freezer).

cmp

Model 24 Under-Counter Refrigerator or Freezer

COLD-WALL TYPE REFRIGERATOR (FREEZER)



Continental Metal Products Co., Inc., reserves the right to change materials and specifications resulting from a continuous effort to improve its products.

Warranty

CMP parts are warranted against factory defects for a period of 1 year, and will be replaced upon return of defective item. All units will be serviced by factory without cost to buyer (labor and materials) for 90 days following installation. After 90 day period, replacement of a defective part (labor) will be at buyer's expense.

Compressors used in CMP units are warranted for 5 years. 90-day provisions stated above also apply.

cmp

CONTINENTAL METAL PRODUCTS CO., INC./P.O. BOX 2295, 35 OLYMPIA AVENUE, WOBURN, MA 01888
 PHONE (781) 935-4400 FAX (781) 935-4404 • www.continentalmetal.com • email address cmpwbn@gis.net