



CONTINENTAL METAL PRODUCTS

**Stainless Steel Healthcare Equipment
Meeting the Demands of the OR**

Model IV32S Sink Section

healthcare division

Proudly Made in the
USA for over 65 years

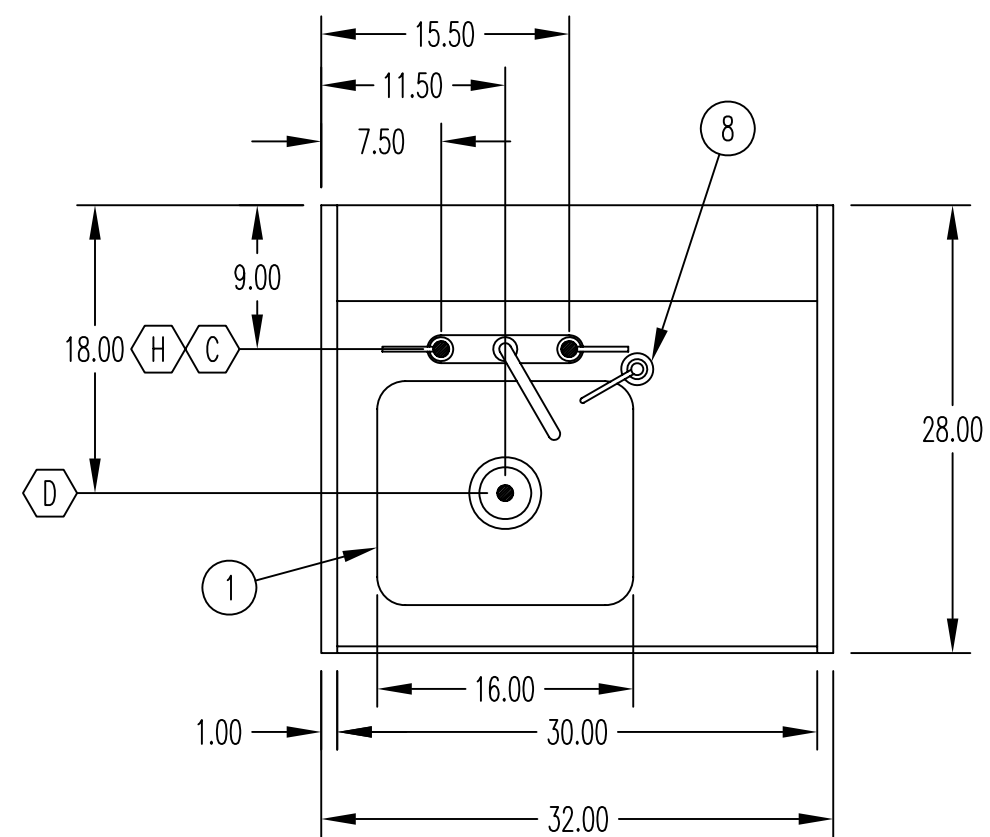


CMP has been building Preparation and Storage Centers for over 65 years. CMP stainless steel Preparation and Storage Centers have been supplied to customers around the world. CMP continues to update and improve the design to meet the needs of our customers. CMP is so confident in our quality and craftsmanship that we offer a one year labor and three year parts warranty.

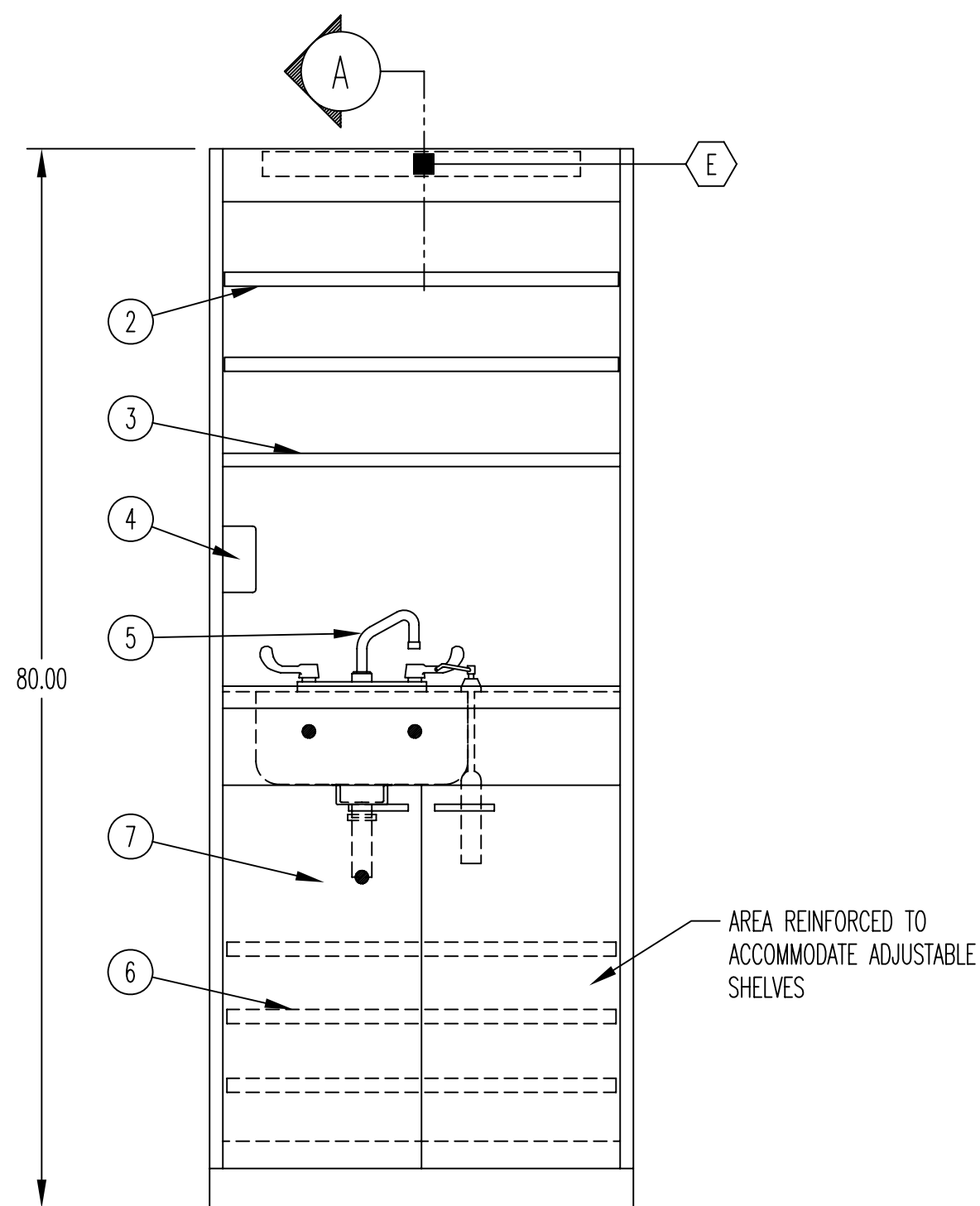
Features:

- Stainless Steel Construction
- Upper Storage Area with Shelves
- Soap Dispenser
- Counter with Integral Sink
- Adjustable Shelves Under Sink
- Fluorescent Light (220V/60HZ)
- Hot and Cold Water Faucet
- Wrist Blade Handles
- Paper Towel Dispenser

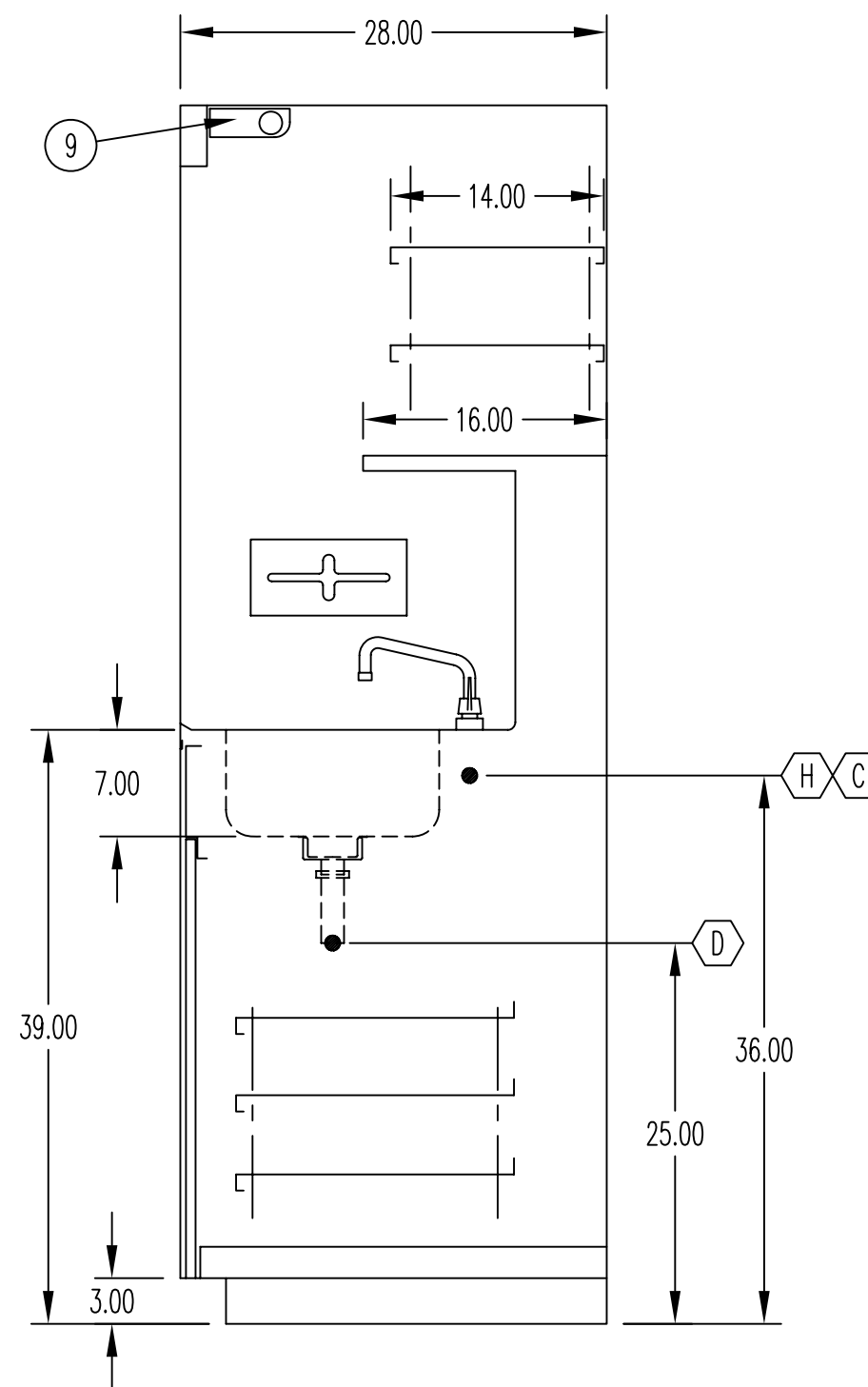
Continental Metal Products Co., Inc. – 35 Olympia Avenue, Woburn, MA 01801
Phone (781) 935-4400 FAX (781) 935-4404 www.continentalmetal.com sales@continentalmetal.com



PLAN OF WORKING SURFACE



ELEVATION



SECTION A

ITEM	DESCRIPTION
①	#16 GA. S/S COUNTER TOP W/ 16" x 14" x 7" SINK
②	S/S ADJ. SHELVES (2)
③	S/S FIXED SHELF
④	PAPER TOWEL DISPENSER
⑤	HOT & COLD WATER FAUCET W/ SWING SPOUT & WRIST BLADES
⑥	(3) ADJUSTABLE SHELVES
⑦	STORAGE COMPARTMENT W/ UTILITY ACCESS
⑧	SOAP DISPENSER
⑨	FLUORESCENT LIGHT (HARDWIRED-SWITCH BY OTHERS)

REQUIRED SERVICES	
H	1/2" I.P.S. HOT WATER
C	1/2" I.P.S. COLD WATER
D	1-1/2" O.D. WASTE
E	220V/60HZ HARDWIRED CONNECTION FOR LIGHT

NOTES:

1. ALL EXPOSED SURFACES CONSTRUCTED OF TYPE 304 S/S, POLISHED TO NO. 4 FINISH, UNLESS OTHERWISE NOTED.
2. ALL SERVICES SHALL BE ROUGHED IN AT REAR OF UNIT. DIMENSIONS INDICATED ARE TO POINTS OF CONNECTION. ALLOWANCES MUST BE MADE FOR VALVES AND TRAPS.
3. DIMENSIONS ARE IN INCHES.

REVISIONS			 CONTINENTAL METAL PRODUCTS CO., INC. 35 OLYMPIA AVE. - WOBURN, MA. 01888		
NO.	DATE	BY			
			MODEL IV32S SINK SECTION FOR PREPARATION AND STORAGE CENTER		
SCALE: 1" = 12"		DATE: 08/01/2013	DRAWN: MAL		
SHEET: 1 OF 1		SYS AC	DWG NO. ACC-1790	REV	